

# C1

## APARTMENT TYPE C1

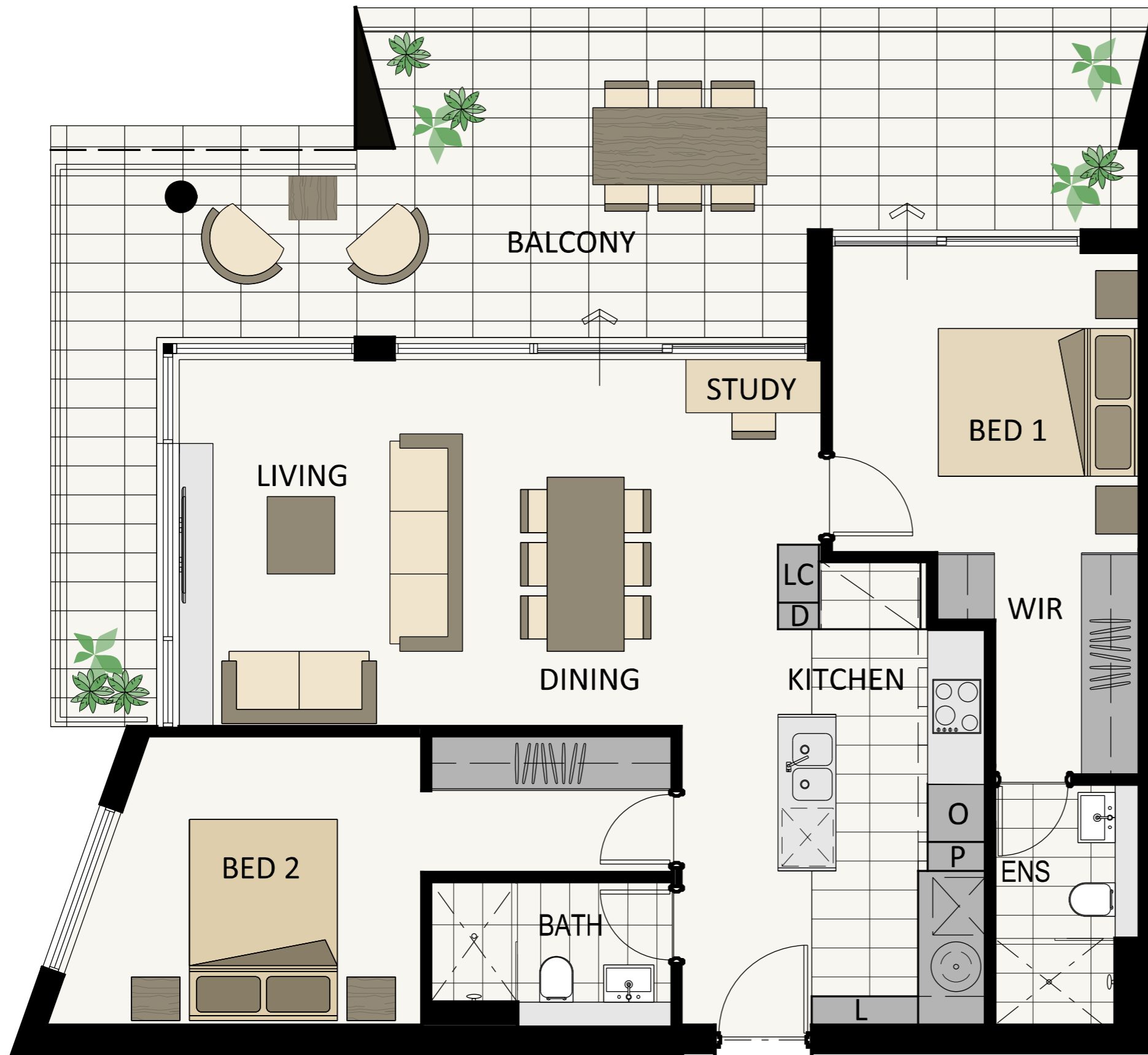
Apartment No.	Balcony	Total Living Area
14, 27, 40, 53, 66, 79	32m <sup>2</sup>	113m <sup>2</sup>
Bedrooms		2
Bathrooms		2
Carbays		1 or 2
Store Room		min 4m <sup>2</sup>

**DESIGNER STATEMENT:**

A large corner apartment with views from every room. Generous living with surrounding glazing to showcase the direct views of the city beyond the large north facing balcony. A large entertainers kitchen, with integrated laundry and discreet bathroom, master ensuite and ample robe storage.

**GENERAL NOTES:**

- Variations from strata plan may apply, furniture is indicative only
- Shape and configuration of living areas, balconies, wall structure, doors, windows, condensers and ducts may differ from those illustrated
- Areas of apartment given are based on architectural measurements. This varies from Strata areas as it is a different method of measuring the apartment.



APARTMENT SHOWN  
14, 40, 66 (Shown)  
27, 53, 79 (Similar)